

CHILDRENS FOOTWEAR

2020/2021 CATALOGUE



est. 1904
NIMCO
MADE 4 YOU



CONTENTS

Introduction	3
How to Create Your Shoe - Nimco Made4You	4
Toddlers Footwear	6
Childrens Footwear	14
Boa Closure System	50
Waterproof Boots	52
Adaptions	54
Bespoke to Measures or Cast	56
General Terms	57
Measurements and Lasts	58



NEW FOR 2020

We are proud to present the 2020/2021 Nimco Made4You Childrens Footwear Range.

WHAT'S NEW:

- 17 New Styles
- New colours for existing styles
- Waterproof Boots
- New Featherweight sole unit
- New Extra Narrow Last



INTRODUCTION

The Nimco Made4You range is now available in 39 different styles which have been subdivided into 2 different categories: Toddlers styles (covering sizes 16 - 27) & Childrens styles (covering sizes 22 - 45).

As always, most styles can be ordered in lace or velcro and many with a choice of 2 back heights: standard or continental (25mm higher)

All Nimco shoes are personally made for you, this allows us to provide you with an unmatched level of reliability. All standard complete orders will be dispatched within 12 to 14 working days.

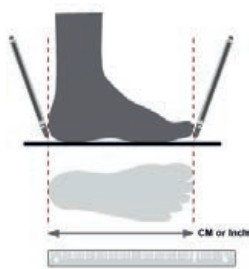
We are also able to offer a full range of adaptations to be added to your order. The majority of adaptations that we provide are applied at the time of manufacture which increases the overall quality whilst maintaining our reliable lead time.



CREATE YOUR FOOTWEAR IN 4 STEPS!

1. Style

When creating your new footwear, the first step is to select your desired style. Once you have decided, you can then select the correct size, closure and backheight.



SIZE



CLOSURE

Continental Height (25mm Extra)



HEIGHT

2. LAST AND StiffENER

Once you have selected your style and options, you can select the required last and stiffener. These selections will determine the type of support provided by your new footwear and ensure that they fit perfectly.

StiffENER OPTIONS

NORMAL StiffENER



This stiffener is ideal for standard lasts and with insoles and supports.

Stability StiffENER



The solid butterfly shaped heelcap in conjunction with the high upper of a boot offer optimum support

ORTHOSIS StiffENER



This sturdy heel cap compliments orthoses lasts as these are shaped to accommodate an AFO

ANTI-VARUS HEEL & TOE CAP



The AV stiffeners strengthen the shoe upper in the areas required to treat Metatarsus Adductus

LAST OPTIONS



All styles are available in 14 different last options:

- 6 Standard Lasts
- 3 Orthosis Lasts
- 5 Anti Varus Lasts

Please consult page 58 for sizes/widths

3. OUTSOLE

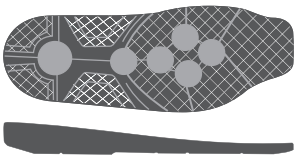
Your choice of outsole will be influenced on whether a stitchdown or cemented sole best meets your needs.

PU SOLE (Flexible and thin PU)



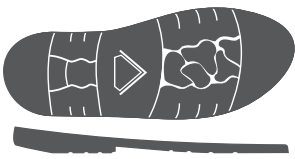
Available in Cemented and Stitchdown construction

SPORT SOLE (EVA midsole outsole made of Rubber)



Available in Cemented and Stitchdown construction

RUBBER SOLE (Long lasting strong rubber)



Available in Cemented and Stitchdown construction

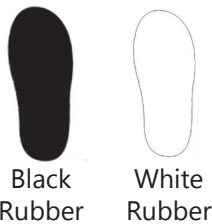
CEMENTED SOLE



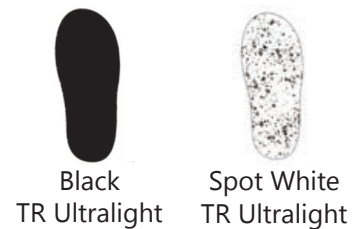
STITCHDOWN SOLE



WELT SOLE (Very light weight and flexible)



or



TR SOLE* (Ultralight weight upper layer and TR bottom material)



*Please be aware when ordering footwear with this sole, flares and socks won't be possible, please select one of the other sole units available.

4. COLOURS & MATERIALS

You can specify which colour/material you require on any aspect of the upper. This is also an ideal solution if you would like to make a particular style suitable for use at school by selecting an appropriate colour such as black, brown or blue. Please state clearly which colours you require on your order.

Please see our website for all the colours available.

Please note: that due to the high level of personalisation, the addition of custom colours to your order will mean that they are treated as non returnable.

TODDLERS



NATHAN

(This style has a medial zip. TR sole as standard)



J846/K1902 Polished Leather Black Combi



R1995/K1906 Waxed Leather Brown Combi



NM1902/R552 Waxed Leather Black Combi



NM1997/L1676 Nappa Blue Combi

Options

CLOSURE
Lace or Velcro

SIZES
16 - 27

HEIGHT
UK Only

LASTS & STIFFENERS
Standard & Stability
6 widths

Orthosis
3 widths

Anti-Varus
5 widths

Soles

The following 2 soles are



TR Sole



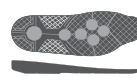
Black Spot White

PU Sole



Black Beige

Sports Sole



Black Brown White



Beige

Rubber Sole



Beige Black

Michael (This style has lace closure and TR sole as standard. Velcro will incur a surcharge)



NM1902/P407 Waxed Leather Brown Combi



NM1902/P1977 Nappa Green Combi



NM1997/P1697 Blue Nappa Combi



NM1902/P402 Waxed Leather Black Combi

Options

CLOSURE
Lace or Velcro

SIZES
16 - 27

HEIGHT
UK Only

LASTS & STIFFENERS
Standard & Stability
6 widths

Orthosis
3 widths

Anti-Varus
5 widths

Soles

The following 2 soles are



TR Sole



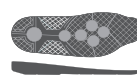
Black Spot White

PU Sole



Black Beige

Sports Sole



Black Brown White



Beige



Beige Black

Sofia

(This style has a medial zip. Available in Welt sole only)



P1960/Y1621 Fantasy Beige Combi



NM1997/Y1997 Fantasy Blue Combi



NM1902/Y1915 Fantasy Purple Leather Combi



NM1902/Y1972 Fantasy Black Combi



N325/Y1925 Fantasy Pink Combi

Options

CLOSURE
Lace or Velcro

SIZES
16 - 27

HEIGHT
UK Only

LASTS & STIFFENERS
Standard & Stability 6 widths
Orthosis 3 widths
Anti-Varus 5 widths

Soles

The following sole is



TR Welt Sole



Black



Spot White

Rubber Welt Sole



Black



White

Y1955 Fantasy Beige



S602 Patent Black



R577 Waxed Leather Fuchsia

Options

CLOSURE
Velcro Only

SIZES
16 - 27

HEIGHT
UK Only

LASTS & STIFFENERS
Standard & Stability
6 widths

Orthosis
3 widths

Anti-Varus
5 widths

Soles

The following 2 soles are



TR Sole



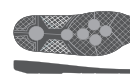
Black Spot White

PU Sole



Black Beige

Sports Sole



Black Brown White

Beige



Rubber Sole



Beige Black

Tommy

(This style has a medial zip. PU sole as standard)



Y1507 Fantasy Pink



P1668 Split Suede Brown



P1672 Split Suede Blue



Y1508 Fantasy Black

Options

CLOSURE
Lace or Velcro

SIZES
16 - 27

HEIGHT
UK Only

LASTS & STIFFENERS
Standard & Stability
6 widths

Orthosis
3 widths

Anti-Varus
5 widths

Soles

The following 2 soles are



TR Sole



PU Sole



Sports Sole



Rubber Sole



CHARLIE (This style has a medial zip. Available in Welt sole only)



L1601/P407 Suede Brown Combi



L1601/P496 Suede Fuchsia Combi



L1601/P497 Suede Blue Combi



NM1902/Y1972 Fantasy Black Combi

Options

CLOSURE
Lace or Velcro

SIZES
16 - 27

HEIGHT
UK Only

LASTS & STIFFENERS
Standard & Stability
6 widths

Orthosis
3 widths

Anti-Varus
5 widths

Soles

The following sole is



TR Welt Sole



Rubber Welt Sole



JESSICA

(This style has a medial zip. TR sole as standard)



NM1927/TG1903 Fabric Fantasy Fuchsia Combi



NM1997/TG1903 Fabric Fantasy Blue Combi



NM1902/Y1932 Fantasy Black Combi



NM1902/TG1902 Fabric Fantasy Black Combi

Options

CLOSURE
Lace or Velcro

SIZES
16 - 27

HEIGHT
UK Only

LASTS & STIFFENERS
Standard & Stability
6 widths

Orthosis
3 widths

Anti-Varus
5 widths

Soles

The following 2 soles are



TR Sole



Black Spot White

PU Sole



Black Beige

Sports Sole



Black Brown White



Beige

Rubber Sole



Beige Black

CHILDRENS



Bambi

(Available in Welt sole only)



R1955/K1906 Waxed Leather Brown Combi



J846/M1402 Polished Leather Black Combi



R502/K1902 Nappa Black Combi



V1430/Y693 Nappa Blue Combi

Options

CLOSURE
Lace or Velcro
or BOA

SIZES
22 - 45

HEIGHT
UK Only

LASTS & STIFFENERS
Standard & Stability 6 widths
Orthosis 3 widths
Anti-Varus 5 widths

Soles

The following sole is



TR Welt Sole



Black



Spot
White

Rubber Welt Sole



Black



White

Josh

(This style has lace closure and PU sole as standard. Velcro will incur a surcharge)



L1603 Nappa Navy



L1602 Nappa Black Combi

Options

CLOSURE
Lace or Velcro

SIZES
22 - 45

HEIGHT
UK Only

LASTS & STIFFENERS
Standard & Stability
6 widths

Orthosis
3 widths

Anti-Varus
5 widths

Soles

The following 2 soles are



TR Sole



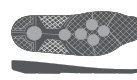
Black Spot White

PU Sole



Black Beige

Sports Sole

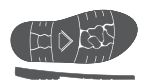


Black Brown White



Beige

Rubber Sole



Beige Black

Y1932/L1602 Fantasy Black



L1602 Nappa Black



S602 Patent Black

Options

CLOSURE
Velcro Only

SIZES
22 - 45

HEIGHT
UK Only

LASTS & STIFFENERS
Standard & Stability
6 widths

Orthosis
3 widths

Anti-Varus
5 widths

Soles

The following 2 soles are



TR Sole



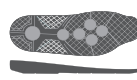
Black Spot White

PU Sole



Black Beige

Sports Sole



Black Brown White

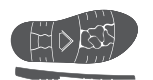


Beige



Beige Black

Rubber Sole



Beige Black

Touchdown (Sports sole as standard)



R552 Waxed Nappa Black



R1604 Nappa Brown



V1420 Nappa Navy

*Please be aware that both Brown and Blue images are shown in Continental height.

Options

CLOSURE
Lace or Velcro

SIZES
22 - 45

HEIGHT
UK & Continental

LASTS & STIFFENERS
Standard & Stability
6 widths

Orthosis
3 widths

Anti-Varus
5 widths

Soles

The following 2 soles are



TR Sole



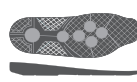
Black Spot White

PU Sole



Black Beige

Sports Sole



Black Brown White



Beige



Beige Black



V1430/P497 Nappa Blue Combi



R552/Y692 Waxed Leather Black Combi



R1955/P407 Waxed Leather Brown Combi

Options

CLOSURE
Lace or Velcro

SIZES
22 - 45

HEIGHT
UK Only

LASTS & STIFFENERS
Standard & Stability
6 widths

Orthosis
3 widths

Anti-Varus
5 widths

Soles

The following 2 soles are



TR Sole



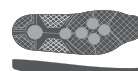
Black Spot White

PU Sole



Black Beige

Sports Sole



Black Brown White

Beige



Rubber Sole



Beige Black



N325/Y1925 Fantasy Pink Combi



E20122/Y1615 Fantasy Purple Combi



L1672/Y1508 Fantasy Black Combi



N302/S1997 Fantasy Blue Combi

Options

CLOSURE
Lace or Velcro

SIZES
22 - 45

HEIGHT
UK Only

LASTS & STIFFENERS
Standard & Stability 6 widths
Orthosis 3 widths
Anti-Varus 5 widths

Soles

The following 2 soles are



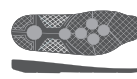
TR Sole



PU Sole



Sports Sole



Rubber Sole





R1955/TS1930 Waxed Leather Brown Combi



R552/TS1976 Waxed Leather Black Combi



J846/L1602 Polished Leather Black



M1654/V1430 Full Grain Aniline Brown Combi

Options

CLOSURE
Lace or Velcro

SIZES
22 - 45

HEIGHT
UK Only

LASTS & STIFFENERS
Standard & Stability 6 widths
Orthosis 3 widths
Anti-Varus 5 widths

Soles

The following 2 soles are

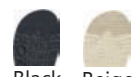


TR Sole



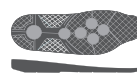
Black Spot White

PU Sole



Black Beige

Sports Sole



Black Brown White



Beige

Rubber Sole



Beige Black

Cool (Rubber sole as standard)



Y1972/P402 Fantasy Black



S602/P402 Patent Black



V1430/P497 Nappa Blue



R502/N302 Nappa Black



N328/P497 Nubuck Navy Combi



S1505/P496 Patent Fuchsia With Dots
*this leather will incur a surcharge

Options

CLOSURE
Lace or Velcro
or BOA

SIZES
22 - 45

HEIGHT
UK & Continental

LASTS & STIFFENERS
Standard & Stability 6 widths
Orthosis 3 widths
Anti-Varus 5 widths

Soles

The following 2 soles
are



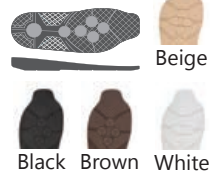
TR Sole



PU Sole



Sports Sole



Rubber Sole



Spike

(This style has lace closure and Sports sole as standard. Velcro will incur a surcharge)



R1603/AR1920 Nappa Navy Combi



R555/P1668 Waxed Leather Brown Combi



R502/AR1977 Nappa Black Combi



R552/P452 Waxed Leather Black Combi

Options

CLOSURE
Lace or Velcro

SIZES
22 - 45

HEIGHT
UK & Continental

LASTS & STIFFENERS
Standard & Stability 6 widths
Orthosis 3 widths
Anti-Varus 5 widths

Soles

The following 2 soles are



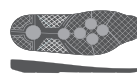
TR Sole



PU Sole



Sports Sole



Rubber Sole





N325/Y1925 Fantasy Pink Combi



E20122/Y1915 Fantasy Purple Combi



P407/Y1955 Fantasy Brown Combi



N302/Y1932 Fantasy Black Combi

Options

CLOSURE
Lace or Velcro

SIZES
22 - 45

HEIGHT
UK Only

LASTS & STIFFENERS
Standard & Stability
6 widths

Orthosis
3 widths

Anti-Varus
5 widths

Soles

The following 2 soles are



TR Sole



Black Spot White

PU Sole



Black Beige

Sports Sole



Black Brown White



Beige

Rubber Sole



Beige Black

SNOOPY (Available in this construction only)



L1601/S1997 Patent Black Combi



L1601/Y1995 Fantasy Beige Combi



L1601/S1825 Fantasy Pink Combi



L1601/S602 Fantasy Black Combi



L1601/Y1632 Fantasy Fuchsia Combi

Options

CLOSURE
Lace or Velcro
or BOA

SIZES
22 - 45

HEIGHT
UK Only

LASTS & STIFFENERS
Standard & Stability
6 widths

Orthosis
3 widths

Anti-Varus
5 widths

Soles

The following sole is



TR Welt Sole



Black



Spot
White

Rubber Welt Sole



Black



White



S1901/Y1955 Fantasy White Combi



Y1972/Y1634 Fantasy Black Combi



N325/Y1663 Nubuck Pink Combi



Y1925/N325 Fantasy Pink Combi

Options

CLOSURE
Velcro Only

SIZES
22 - 45

HEIGHT
UK Only

LASTS & STIFFENERS
Standard & Stability
6 widths

Orthosis
3 widths

Anti-Varus
5 widths

Soles

The following 2 soles are



TR Sole



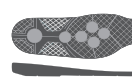
Black Spot White

PU Sole



Black Beige

Sports Sole



Black Brown White



Beige

Rubber Sole



Beige Black



R507/Y1640 Nappa Fuchsia Combi



E20122/Y1632 Nappa Purple Combi



Y1932/L1602 Fantasy Black Combi



S602/P1658 Patent Black Combi



N302/Y1615 Nubuck Black Combi

Options

CLOSURE
Lace or Velcro

SIZES
22 - 45

HEIGHT
UK & Continental

LASTS & STIFFENERS
Standard & Stability 6 widths
Orthosis 3 widths
Anti-Varus 5 widths

Soles

The following 2 soles are



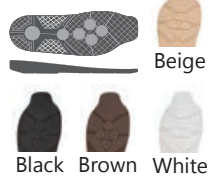
TR Sole



PU Sole



Sports Sole



Rubber Sole



ARIANA

(This style has a medial zip. Rubber sole as standard)



Y1972/L1602 Fantasy Black



TG1902/L1602 Fabric Black Multicolour



Y1915/L1602 Fantasy Purple



S1997/L1602 Fantasy Blue

Options

CLOSURE
Lace or Velcro

SIZES
22 - 45

HEIGHT
UK & Continental

LASTS & STIFFENERS
Standard & Stability 6 widths
Orthosis 3 widths
Anti-Varus 5 widths

Soles

The following 2 soles are

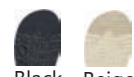


TR Sole



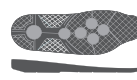
Black Spot White

PU Sole



Black Beige

Sports Sole



Black Brown White



Beige



Beige Black

Rubber Sole



Beige Black

Delia (Available in Welt sole only)



N302 Nubuck Black



L1601 Nappa White

Options

CLOSURE
Lace or Velcro

SIZES
22 - 45

HEIGHT
UK Only

LASTS & STIFFENERS
Standard & Stability
6 widths

Orthosis
3 widths

Anti-Varus
5 widths

Soles

The following sole is



TR Welt Sole



Black



Spot
White

Rubber Welt Sole



Black



White



L1977/AR1977 Nappa Green Combi



N302/L1602 Nubuck Black Combi



V1430/P497 Nappa Blue Combi



R552/AR1920 Waxed Leather Black Combi

Options

CLOSURE
Lace or Velcro

SIZES
22 - 45

HEIGHT
UK Only

LASTS & STIFFENERS
Standard & Stability
6 widths

Orthosis
3 widths

Anti-Varus
5 widths

Soles

The following sole is



TR Welt Sole



Rubber Welt Sole





M1909/P1905 Full Grain Aniline Brown Combi



M1503/P497 Full Grain Aniline Blue Combi



J846/TR1932 Polished Leather Black Combi



R552/P452 Waxed Leather Black Combi

Options

CLOSURE
Lace or Velcro

SIZES
22 - 45

HEIGHT
UK Only

LASTS & STIFFENERS
Standard & Stability 6 widths
Orthosis 3 widths
Anti-Varus 5 widths

Soles

The following 2 soles are



TR Sole



Black Spot White

PU Sole



Black Beige

Sports Sole



Black Brown White



Beige



Beige Black



M1932/S607 Full Grain Aniline Red Combi

L1977/AR1977 Nappa Green Combi



P452/R552 Split Suede Black Combi



V1430/AR1920 Nappa Blue Combi



M1932/NM1902 Full Grain Aniline Grey Combi

Options

CLOSURE
Lace or Velcro

SIZES
22 - 45

HEIGHT
UK Only

LASTS & STIFFENERS
Standard & Stability
6 widths

Orthosis
3 widths

Anti-Varus
5 widths

Soles

The following 2 soles are



TR Sole



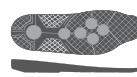
Black Spot White

PU Sole



Black Beige

Sports Sole



Black Brown White

Rubber Sole



Beige Black

DAKOTA (PU sole as standard)



Y1955 Fantasy Beige



Y1507 Fantasy Pink



Y1508 Fantasy Black



Y1925 Leopard Fantasy Pink



R1955 Waxed Leather Brown



R552 Waxed Leather Black

Options

CLOSURE
Lace or Velcro

SIZES
22 - 45

HEIGHT
UK Only

LASTS & STIFFENERS
Standard & Stability
6 widths

Orthosis
3 widths

Anti-Varus
5 widths

Soles

The following 2 soles are

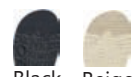


TR Sole



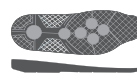
Black Spot White

PU Sole



Black Beige

Sports Sole



Black Brown White



Beige

Rubber Sole



Beige Black



N301/TG1903 Fabric White Combi



N325/Y1925 Fantasy Pink Combi



N302/Y1982 Fantasy Black Combi



N328/S1997 Fantasy Blue Combi

Options

CLOSURE
Velcro Only

SIZES
22 - 45

HEIGHT
UK Only

LASTS & STIFFENERS
Standard & Stability 6 widths
Orthosis 3 widths
Anti-Varus 5 widths

Soles

The following 2 soles are



TR Sole



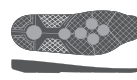
Black Spot White

PU Sole



Black Beige

Sports Sole



Black Brown White



Beige

Rubber Sole



Beige Black



L1977/P1977 Nappa Green Combi



R552/N302 Waxed Leather Black Combi



V1430/P497 Nappa Blue Combi



R1955/P407 Waxed Leather Brown Combi

Options

CLOSURE
Velcro Only

SIZES
22 - 45

HEIGHT
UK Only

LASTS & STIFFENERS
Standard & Stability
6 widths

Orthosis
3 widths

Anti-Varus
5 widths

Soles

The following 2 soles are



TR Sole



Black Spot White

PU Sole



Black Beige

Sports Sole



Black Brown White



Beige

Rubber Sole



Beige Black

LOGAN (Available in Welt sole only)

(This style has lace closure as standard. Velcro will incur a surcharge)



L1977/P1977 Nappa Green Combi



M1503/P497 Full Grain Aniline Blue Combi



M1909/P1905 Full Grain Aniline Brown Combi



NM1902/P452 Nappa Black Combi

Options

CLOSURE
Lace or Velcro

SIZES
22 - 45

HEIGHT
UK Only

LASTS & STIFFENERS
Standard & Stability
6 widths

Orthosis
3 widths

Anti-Varus
5 widths

Soles

The following sole is



TR Welt Sole



Black



Spot White

Rubber Welt Sole



Black



White



L1672/Y1634 Nappa Black Combi



L1977/Y1634 Nappa Green Combi



M1903/Y1634 Full Grain Aniline Navy Combi



R1955/Y1634 Waxed Leather Brown Combi

Options

CLOSURE
Lace or Velcro

SIZES
22 - 45

HEIGHT
UK Only

LASTS & STIFFENERS
Standard & Stability
6 widths

Orthosis
3 widths

Anti-Varus
5 widths

Soles

The following 2 soles are



TR Sole



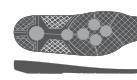
Black Spot White

PU Sole



Black Beige

Sports Sole



Black Brown White



Beige



Rubber Sole



Beige Black

Robin

(This style has a medial zip. Rubber sole as standard)



R502 Nappa Black
*embroidery will incur a surcharge





F1602 Polished Leather Black



L1676 Nappa Blue



TG1902 Fabric Black Multicolour



S606 Patent Fuchsia



S602 Patent Black

Options

CLOSURE
Lace or Velcro

SIZES
22 - 45

HEIGHT
UK & Continental

LASTS & STIFFENERS
Standard & Stability
6 widths

Orthosis
3 widths

Anti-Varus
5 widths

Soles

The following 2 soles are



TR Sole



Black Spot White

PU Sole



Black Beige

Sports Sole



Black Brown White



Beige

Rubber Sole



Beige Black

KATE

(This style has a lateral zip. Available in Welt sole only)



N301/TG1903 Fabric White Combi

GREAT NEW FEATURE!



- Stops zips from sliding open
- Helps to protect clothes from catching
- Available in the following styles:
Kate, Nathan, Sofia,
Jessica, Ariana, Tyler,
Jean, Jordan & Levi



L1672/S1997 Fantasy Blue Combi



N325/Y1925 Fantasy Pink Combi



L1672/Y1932 Fantasy Black Combi

Options

CLOSURE
Lace or Velcro

SIZES
22 - 45

HEIGHT
UK Only

LASTS & STIFFENERS
Standard & Stability
6 widths

Orthosis
3 widths

Anti-Varus
5 widths

Soles

The following sole is



TR Welt Sole



Rubber Welt Sole



TopGUN

(This style has lace closure and Sports sole as standard. Velcro will incur a surcharge)



R560/TR1904 Waxed Leather Brown Combi



N302/TR1932 Nubuck Black Combi



V1420/P1653 Nappa Navy Combi



R502/P452 Nappa Black Combi

Options

CLOSURE
Lace or Velcro

SIZES
22 - 45

HEIGHT
UK & Continental

LASTS & STIFFENERS
Standard & Stability
6 widths

Orthosis
3 widths

Anti-Varus
5 widths

Soles

The following 2 soles are



TR Sole



Black Spot White

PU Sole



Black Beige

Sports Sole



Black Brown White

Beige



Rubber Sole



Beige Black



R502/L1601 Nappa Black Combi



R507/VS1926 Nappa Fuchsia Combi



R576/L1601 Waxed Leather Blue Combi



N302/TS1976 Nubuck Black Combi

Options

CLOSURE
Lace, Velcro or
Boa

SIZES
22 - 45

HEIGHT
UK Only

LASTS & STIFFENERS
Standard & Stability
6 widths

Orthosis
3 widths

Anti-Varus
5 widths

Soles

The following 2 soles
are



TR Sole



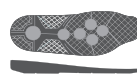
Black Spot
White

PU Sole



Black Beige

Sports Sole



Black Brown White

Beige

Rubber Sole



Beige Black



TG1902/N302 Fabric Multicolour Black Combi



R502/N302 Nappa Black Combi



V1430/NA1976 Nappa Blue Combi



R577/P496 Waxed Leather Fuchsia Combi

Options

CLOSURE
Velcro Only

SIZES
22 - 45

HEIGHT
UK Only

LASTS & STIFFENERS
Standard & Stability
6 widths

Orthosis
3 widths

Anti-Varus
5 widths

Soles

The following 2 soles are



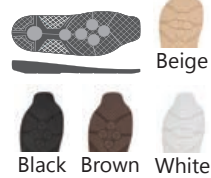
TR Sole



PU Sole



Sports Sole



Rubber Sole



RENE

(This style has a medial zip. Available in Welt sole only)



M1401/P1633 Split Suede Red Combi



M1401/Y1955 Fantasy Beige Combi



M1401/M1503 Full Grain Aniline Blue Combi



M1401/M1452 Full Grain Aniline Black Combi

Options

CLOSURE
Lace or Velcro

SIZES
22 - 45

HEIGHT
UK Only

LASTS & STIFFENERS
Standard & Stability
6 widths

Orthosis
3 widths

Anti-Varus
5 widths

Soles

The following sole is



TR Welt Sole



Rubber Welt Sole



Lou (Available in Welt sole only)



P452/TR1902 Suede Black Combi



N328/L1601 Nubuck Navy Combi



N1627/L1601 Nubuck Red Combi



N325/L1601 Nubuck Pink Combi

Options

CLOSURE
Lace or Velcro

SIZES
22 - 45

HEIGHT
UK Only

LASTS & STIFFENERS
Standard & Stability
6 widths

Orthosis
3 widths

Anti-Varus
5 widths

Soles

The following sole is



TR Welt Sole



Rubber Welt Sole



Levi (This style has a medial zip. Available in Welt sole only)



M1909 Full Grain Aniline Brown



M1903 Full Grain Aniline Navy



Y1932 Fantasy Black



M1452 Full Grain Aniline Black



M1932 Full Grain Aniline Grey



M1927 Full Grain Aniline Red

Options

CLOSURE
Lace or Velcro

SIZES
22 - 45

HEIGHT
UK and Continental

LASTS & STIFFENERS
Standard & Stability
6 widths

Orthosis
3 widths

Anti-Varus
5 widths

Soles

The following sole is



TR Welt Sole



Rubber Welt Sole



BOA®

CLOSURE SYSTEM

"Boa Closure" is a unique and stylish closure system available with Nimco footwear!

The Boa system uses steel lace, nylon guides and a mechanical reel that was designed to address deficiencies in traditional closures and offers many advantages when fitted with Nimco footwear.

These include:

- Increased independence for children who have difficulty tying laces allowing easy one handed adjustment with a quick turn of the dial.
- Custom comfort with smooth, even closure and no pressure points.
- Powerful Closure with locked laces staying that way
- Very strong laces made from aircraft grade stainless steel
- Micro adjustability with many degrees of fine tuning
- Extremely light weight and able to shed water, mud and ice!



PLEASE SEE BELOW STYLES THAT ARE AVAILABLE WITH THE BOA CLOSURE SYSTEM:



Bambi



Shiny



Snoopy



Cool



L1676/NM1997 Nappa Blue Combi

Back Opening

Easy to put on and designed specially for use with orthoses



L1672/P402 Nappa Black Combi



N325/Y1925 Nubuck Pink Combi



Y1972/S602 Fantasy Black Combi

Options

CLOSURE
BOA Only

SIZES
24 - 45

HEIGHT
UK Only

LASTS & STIFFENERS
Standard & Stability
6 widths

Orthosis
3 widths

Anti-Varus
5 widths

Soles

The following 2 soles are



TR Sole



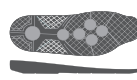
Black Spot White

PU Sole



Black Beige

Sports Sole



Black Brown White

Beige



Rubber Sole



Beige Black

WATER RESISTANT FOOTWEAR

This water resistant style has been designed specifically for people who require all the benefits of Nimco Made4You footwear but also need extra protection for wet weather conditions.

This style is made with special leathers that will not be easily damaged by water. To further increase your protection from rain and snow, you can include NimcoTex Lining* on your order; this membrane is put in between the leather uppers and the lining to further increase the water resistance.

* there is a surcharge for NimcoTex Lining





WP594/WP590 Waterproof Leather Brown Combi



WP592/WP590 Waterproof Leather Black Combi



WP590/WP594 Waterproof Leather Brown Combi

Options

CLOSURE
Lace or Velcro

SIZES
22 - 45

HEIGHT
UK Only

LASTS & STIFFENERS
Standard & Stability
6 widths

Orthosis
3 widths

Anti-Varus
5 widths

Soles

The following sole is



PU Sole



Rubber Sole



Adaptions

We are pleased to be able to offer a full range of adaptations that can be added to your footwear. As we make our footwear to order, we are able to add many of our adaptations at the time of manufacture. This allows us to maintain a very high quality of product. Below are the adaptations that we currently offer:

- B1 - Outside compensating raise up to 25mm with a rand, per shoe
- B2 - Each subsequent 25mm or part thereof
- B3 - Outside compensating raise up to 25mm without a rand, per shoe
- B4 - Each subsequent 25mm or part thereof
- B5 - Raising the heel in a single item of footwear up to 25mm
- B6 - Lowering the heel
- B7 - Addition of heel seat or valgus/varus wedge fitted to shoe, per shoe
- B8 - Stirrup, heel, toe raising of caliper retaining strap
- B9 - Additional padding in a single item of footwear
- B10 - Lower the upper beneath the ankle on one side, per shoe
- B13 - Convert to velcro fastening, refacing where necessary, per strap
- B14 - Addition of lambswool lining or similar, per shoe
- B15 - Addition of high elongated stiffener to the medial/lateral aspect of the upper, per shoe
- B16 - Addition of a metatarsal bar fitted to the sole, per shoe
- B17 - Inclusion of a rocker sole, per shoe
- B18 - Inclusion of a wedge fitted into or onto the sole, per shoe
- B19 - Inclusion of a floated sole, per shoe
- B20 - Inclusion of a sole strip or plate in composite material, per shoe
- B21 - Inclusion of a sole strip or plate in non-composite material, per shoe
- B22 - Addition of a rubber or steel tip to the sole or heel, per shoe
- B23 - Addition of a tip with a flange to protect the welt, per shoe
- B24 - Addition of an external protective toe cap. per shoe
- B25 - Addition of a full or half elongated, oblique, floated heel or heel wedge or torque heel, per shoe (Combinations of these items will be charged as multiples of B25)
- B30 - Inclusion of a socket, to one or both sides of the heel, without front or backstops, per shoe
- B31 - Inclusion of a socket, to one or both sides of the heel, with front or backstops, per shoe
- B32 - Inclusion of a toe raising/torsion socket, per shoe
- B33 - Addition of a lined and padded T or Y strap, per shoe
- B34 - Addition of a lined and padded double decker T or Y strap, per shoe
- B40 - Inclusion of a full length or three quarter non moulded inlay in a non-shock absorbent material. bontex, plastazote or leather, covered in a suitable material if required, per shoe
- B40b - As B40 but manufactured in shock absorbant material: poron, etc
- B40c - As B40 but manufactured in silicone
- B41 - Inclusion of a metatarsul or valgus support or heel pad fitted to B40, each
- B42 - Inclusion of a metatarsul or valgus support or heel pad fitted directly to the shoe, per shoe
- B43 - Inclusion of a heel elevator in cork, HDP or EVA with suitable covering, each
- B50 - Inclusion of an inlay with filler to compensate for the amputation of some or all of the toes, per shoe
- B51 - Inclusion of an inlay with filler to compensate for the amputation of the forefoot, per shoe
- B54A - Functional Foot Orthosis made to cast - composite material
- B54C - Functional Foot Orthosis or Total Contact inlay made to cast
- B55A - Covering for an inlay single density
- B55B - Covering for an inlay dual density
- B56 - Functional Foot Orthosis posting
- B57 - Stretching a single item of footwear

FOOTWEAR REPAIRS:

- C12 - Refacing including eyelets, ski hooks - per pair
- C13 - Replace eyelets, ski hooks or D rings per pair
- C14 - Renew laces - per pair
- C19 - Relining the back of a single item of footwear
- C21 - Soling & heeling in synthetic material or rubber, per pair
- C22 - Soling & heeling in commando units - per pair
- C27 - Renew stick on soles - per pair

NIMCO STOCK INLAYS

ANTI-PRONATION Inlay



The anti-pronation foot orthosis aims to resist excessive pronatory moments. It features a medium density EVA base, alcantara top cover and a 3 degrees intrinsic medial heel post.

NEUROLOGICAL Inlay



The neurological foot orthosis incorporates a deep heel cup, peroneal notch, enhanced transverse arch and a 2nd and 5th toe crest with the aim to assist in tone reduction.

LAST ADDITIONS

You can specify the following additions to the last when ordering your footwear:

- Extra joint width
- Extra depth (either localised or throughout)
- Extra circumference to the joint or instep
- Changes to the top line circumference
- Hallux Valgus accommodation
- Extra width on base of 5th
- Extra width on the medial side mid foot
- Hammertoes accommodation
- Haglund module

If you would like to add any of these modifications, you can detail them on your order and they will be included when your footwear is manufactured to your specifications.



PATTERN CHANGES

To supplement the range of last additions that we can offer, it is possible to request changes to the pattern of the shoe upper. This allows you to request functional changes such as different opening or cosmetic changes to the design of the shoe to increase compliance.

You can request the following pattern changes to the shoe upper when ordering your footwear.

- Lower opening to make it easier to put shoes on rigid feet or clawing toes
- Addition of a Zip closure to avoid undoing a lace closure each time you need to take your shoes off
- Changes to the design (other than colour) such as extra decorative stripes or rear tabs

If you would like to add any of these modifications, you can detail them on your order and they will be included when your footwear is manufactured to your specifications.

BESPOKE TO MEASURES

When your footwear requirements fall completely outside our standard size and width measurements, we offer a fully bespoke to measurement service.

If you would like to order any of our styles based on your custom measures or drafts, please supply the following additional information with your order:

- Size: This can be in mm or expressed as a UK or European shoe size;
- Joint width: This width will ensure that the forefoot and/or orthosis will be correctly accommodated;
- Joint circumference: This Circumference allows you to specify the volume required for the forefoot. You can also specify the toe box depth to further tailor your footwear;
- Instep circumference: This measurement ensures that the facings of the shoe will not be too close together or too far apart when closed against the foot;
- Long heel circumference: Providing this measurement will make sure that there is sufficient volume in the rear of the shoe to allow for the rearfoot and ankle or an AFO.

Your order can be processed as a trial fit if necessary to allow further modifications after fitting.



BESPOKE TO CAST

For more complex foot shapes, we can manufacture any of our styles to a cast of your patient's feet.

In order to create your bespoke to cast order, please send us the patient's foot cast along with the specifications you require the footwear to adhere to. To further improve the accuracy of the cast, you can include a foot outline draft to confirm the correct lengths of the feet.

It is recommended that you have all made to cast orders made to trial fit to ensure that all areas of the feet or AFO are properly accommodated both in sitting and weight bearing positions. Once you have approved the trial, we will apply the sole and finish your footwear to your exact specifications.

Please Note:

Due to the personalised nature of made to measure and made to cast orders, they are treated as non returnable.

GENERAL TERMS

ORDERING

To place an order, please post, email or fax us with your requirements. If you prefer to use product codes to describe your footwear, please contact us and we will be happy to send you our latest order code list.

DELIVERY

Custom Made Footwear is made to order and so we are able to provide very accurate delivery times. Once we have received your order it will be processed and sent electronically to Nimco for manufacture. On receipt of your order we will deliver to you in 12 - 14 working days. This delivery timescale is very reliable so you are able to make your next patient appointment with confidence. If a delay does occur with your order, we will always contact you and explain the delay.

SPLIT PAIRS

Split pairs are processed in the same way as the custom made range unless agreed otherwise. Once your order is received it will attract the same reliable delivery scale as the custom made range. All split pair orders attract a 50% surcharge and can be split in any way (last, size, stiffener).

RETURNS

When you receive your order we want you to be happy with every aspect of your footwear. However if you need to return the footwear for any reason. We will be happy to receive them under the following conditions:

- Your footwear must be unworn and be less than 30 days from date of delivery.
- Most custom made boots are returnable, however they attract a 25% restocking fee.
- Unfortunately, we cannot accept returns of sandal styles, i.e. Goliath and Surf.
- Footwear which has been ordered as a split pair are also non-returnable.
- Finally, any order which has been adapted in any way or utilises non catalogue colours or styles can not be returned.

Your statutory rights are not affected.

PAYMENT AND DELIVERY

Payment terms and delivery tariff information are available on request as this is dependent on your geographical location and pre agreed credit terms. If you have any other queries, please don't hesitate to contact us and we will be more than happy to assist you.



@DeNovoHealthcareLtd



@denovoUK



www.denovohealthcare.com



01934 808 416



01934 808 405



sales@denovohealthcare.com

STANDARD LASTS MEASUREMENTS

This table illustrates the measures for the standard lasts.

The Length⁽¹⁾, Joint Width⁽²⁾ and Instep circumference⁽³⁾ positions are illustrated below for reference. All sizes are with inlay inserted into shoe.

Shoe*		TN1 -X Narrow		TN2 -Narrow		TN4 -Medium		TN6 - Wide		TN8 - X Wide		TN10 - XX Wide	
Size	Length ⁽¹⁾	Joint ⁽²⁾	Instep ⁽³⁾	Joint ⁽²⁾	Instep ⁽³⁾	Joint ⁽²⁾	Instep ⁽³⁾	Joint ⁽²⁾	Instep ⁽³⁾	Joint ⁽²⁾	Instep ⁽³⁾	Joint ⁽²⁾	Instep ⁽³⁾
16	105	43	116	45	121	49	131	53	140	56	150	60	160
17	112	44	120	46	125	50	135	54	144	57	154	61	164
18	118	46	124	48	129	52	138	56	148	59	158	63	168
19	125	48	128	50	133	54	143	58	152	61	162	65	172
20	132	50	132	52	137	56	147	60	156	63	166	67	176
21	138	52	136	54	141	58	151	62	160	65	170	69	180
22	145	53	140	55	145	59	155	63	164	66	174	70	184
23	152	54	144	56	149	60	159	64	168	67	178	71	188
24	158	56	149	58	153	62	163	66	172	69	182	73	192
25	165	57	152	59	157	63	167	67	176	70	186	74	196
26	172	59	156	61	161	65	171	69	180	72	190	76	200
27	178	60	160	62	165	66	175	70	184	73	194	77	204
28	185	61	164	63	169	67	179	71	188	74	198	78	208
29	192	63	168	65	173	69	183	73	192	76	202	80	212
30	198	64	171	66	176	70	186	74	195	77	206	81	216
31	205	65	175	67	180	71	190	75	199	78	210	82	220
32	212	67	178	69	183	73	193	77	202	80	214	84	224
33	218	69	182	71	187	75	197	79	206	82	218	86	228
34	225	70	186	72	191	76	201	80	210	83	222	87	232
35	231	71	190	73	195	77	205	81	214	84	226	88	236
36	238	73	194	75	199	79	209	83	218	86	230	90	240
37	245	74	198	76	203	80	213	84	222	87	234	91	244
38	251	76	202	78	207	82	217	86	226	89	238	93	248
39	258	77	206	79	211	83	221	87	230	90	242	94	252
40	265	79	211	81	216	85	226	89	235	92	246	96	256
41	271	81	215	83	220	87	230	91	239	94	250	98	260
42	278	82	219	84	224	88	234	92	243	95	254	99	264
43	285	84	223	86	228	90	238	94	247	97	258	101	268
44	291	86	227	88	232	92	242	95	251	98	262	102	272
45	298	88	231	90	236	94	246	97	255	100	266	104	276

All dimensions are in millimeters

*Please ensure that desired toe room is added to the length before choosing shoe size

The AV Lasts TN2/AV, TN4/AV, TN6/AV, TN8/AV and TN10/AV are comparable to the standard last measurements but with a different forefoot alignment



Measurements:
 1 - Length
 2 - Joint Width
 3 - Instep Circumference



ORTHOSES LASTS MEASUREMENTS

This table illustrates the measures for the orthoses lasts. The TN8 and TN10 lasts are the same as the standard lasts but with reduced toe spring. The TN10xls last is the same as the TN10 but with extra volume by increasing the long heel circumference.

The Length(1), Joint Width(2), Instep circumference(3) and Long Heel circumference(4) positions are illustrated below for reference. All sizes are with inlay inserted into shoe.

Shoe*		TN8/ort - X Wide			TN10/ort - XX Wide			TN10xls/ort - Extra Volume		
Size	Length ⁽¹⁾	Joint ⁽²⁾	Instep ⁽³⁾	Long Heel ⁽⁴⁾	Joint ⁽²⁾	Instep ⁽³⁾	Long Heel ⁽⁴⁾	Joint ⁽²⁾	Instep ⁽³⁾	Long Heel ⁽⁴⁾
16	105	56	150	175	60	160	180	60	160	189
17	112	57	154	183	61	164	188	61	164	197
18	118	59	158	192	63	168	197	63	168	206
19	125	61	162	200	65	172	205	65	172	214
20	132	63	166	208	67	176	213	67	176	222
21	138	65	170	217	69	180	222	69	180	231
22	145	66	174	225	70	184	230	70	184	239
23	152	67	178	234	71	188	239	71	188	248
24	158	69	182	242	73	192	247	73	192	256
25	165	70	186	251	74	196	256	74	196	265
26	172	72	190	259	76	200	264	76	200	273
27	178	73	194	268	77	204	273	77	204	282
28	185	74	198	276	78	208	281	78	208	290
29	192	76	202	285	80	212	290	80	212	299
30	198	77	206	294	81	216	299	81	216	308
31	205	78	210	302	82	220	307	82	220	316
32	212	80	214	310	84	224	315	84	224	324
33	218	82	218	319	86	228	324	86	228	333
34	225	83	222	328	87	232	333	87	232	342
35	231	84	226	336	88	236	341	88	236	350
36	238	86	230	345	90	240	350	90	240	359
37	245	87	234	353	91	244	358	91	244	367
38	251	89	238	362	93	248	367	93	248	376
39	258	90	242	370	94	252	375	94	252	384
40	265	92	246	378	96	256	383	96	256	392
41	271	94	250	387	98	260	392	98	260	401
42	278	95	254	396	99	264	401	99	264	410
43	285	97	258	404	101	268	409	101	268	418
44	291	98	262	412	102	272	417	102	272	426
45	298	100	266	421	104	276	426	104	276	435

All dimensions are in millimeters

*Please ensure that desired toe room is added to the length before choosing shoe size

The AV Lasts TN2/AV, TN4/AV, TN6/AV, TN8/AV and TN10/AV are comparable to the standard last measurements but with a different forefoot alignment



Measurements:
1 - Length
2 - Joint Width
3 - Instep Circumference





DeNovo Healthcare Ltd

Unit 6a Cheddar Business Park
Wedmore Road
Cheddar
BS27 3EB

Tel: 01934 808 416
Fax: 01934 808 405
E-mail: sales@denovohealthcare.com
Website: www.denovohealthcare.com

